



MONTHLY MEMBERSHIP PROGRESS REPORT

District 7 L

Results as of: 5/31/2017

GMT: HAL GRIFFIN

LOCATION ARKANSAS

GMT CA

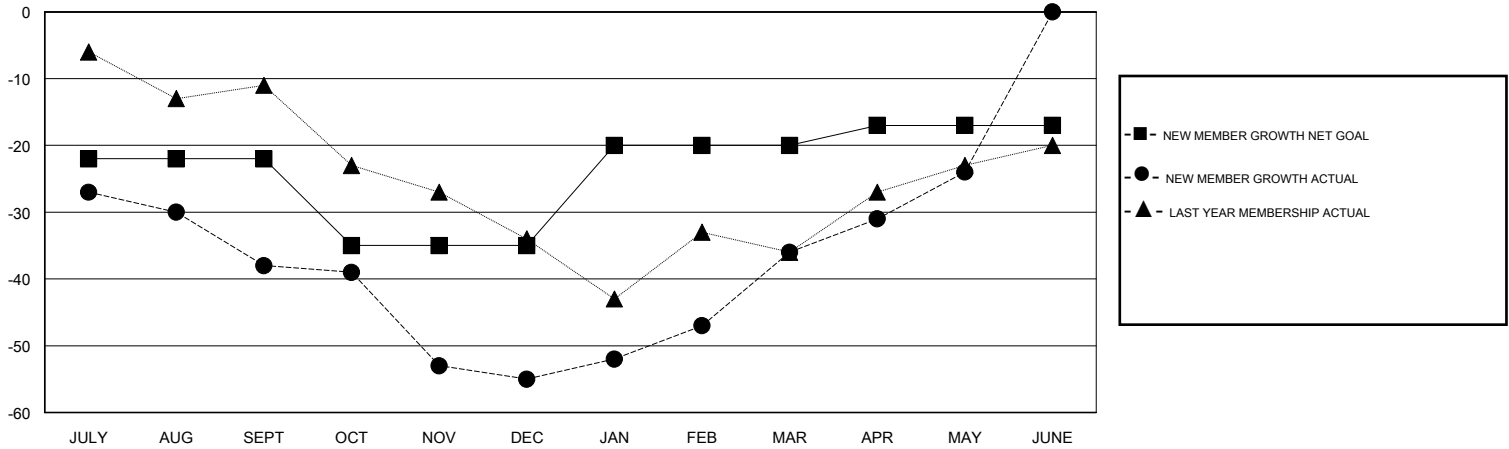
Clubs			
RESULTS FOR 2016-2017			
QUARTER	NEW CLUB GOAL	NEW CLUBS	DROPPED CLUBS
JULY/AUG/SEPT	0	0	2
OCT/NOV/DEC	0	0	0
JAN/FEB/MAR	1	0	0
APR/MAY/JUNE	0	0	0

Members			
RESULTS FOR 2016-2017			
QUARTER	NEW MEMBER GROWTH NET GOAL (not reinstated or transfers)	NEW MEMBER GROWTH ACTUAL (not reinstated or transfers)	DROPPED MEMBERS ACTUAL (including transfers)
JULY/AUG/SEPT	-22	15	53
OCT/NOV/DEC	-13	15	32
JAN/FEB/MAR	15	37	18
APR/MAY/JUNE	3	26	14

GOALS AND ACTUAL NEW CLUBS CUMULATIVE



GOALS AND ACTUAL MEMBERS CUMULATIVE



DROPPED CLUBS: 2	21 CLUBS OF 32 ADDED 1 OR MORE NEW MEMBERS	GENDER DISTRIBUTION
		MALE 523 (62.94%)
		FEMALE 308 (37.06%)
DROPPED MEMBERS	CLICK HERE FOR CUMULATIVE MEMBERSHIP DATA	TOTAL FAMILY UNIT MEMBERS 116
DECEASED 7		FAMILY MEMBERS PAYING HALF DUES 60
CLUB CANCELLED 0		
OTHER 110		
TOTAL 117		